

# EAST BEECHBORO PRIMARY SCHOOL



Photo Courtesy MSP Photography

## 2022 ANNUAL REPORT





## Endorsement

Karen Lippinkhof  
School Board Chair

Date: 03/04/2023

Jonas Byford  
Principal

Date: 03/04/2023

*The 2022 Annual School Report has the endorsement of the East Beechboro Primary School Board which is representative of the East Beechboro Primary School Community and Staff.*

## School Priorities

Teaching Quality

Learning Environment

Leadership and Governance

Relationships and Partnerships

Use of Resources

Student Achievement and Progress

## Our Values

### Learning

We have a positive approach to learning and encourage it in others. We advance learning based on our belief that all students have the capacity to learn.

### Excellence

We have high expectations of our students and ourselves. We set standards of excellence and strive to achieve them. The standards and expectations challenge all of us to give our best.

### Equity

We recognise the differing circumstances and needs of our students and are dedicated to achieving the best possible outcomes for all. We strive to create workplaces and learning environments that are free of discrimination, abuse or exploitation.

### Care

We treat all individuals with care. Our relationships are based on trust, mutual respect and the acceptance of responsibility. We recognise the value of working in partnership with parents/caregivers and the wider community in providing a quality education for our students.

*Dear Parents and School Community*

*I would like to present to you the 2022 East Beechboro Primary School Annual Report.*

*This report is designed to provide information about the performance of East Beechboro Primary School in the third year of our current Business Plan. It highlights our achievements and successes, opportunities for improvement and will inform our community of our initiatives and outcomes.*

*The 2022 school year commenced smoothly and without the threat of COVID-19 affecting how our school operated and delivered its educational programs. This, however, changed very quickly with limits placed on in-school gatherings by the end of Week 1 and by the start of Week 2, no gatherings being permitted on school grounds at all. Term 1 also saw a mask mandate for all students in Years 3 and above, and changes to close contact and quarantine rules. The start of Term 2 saw schools returning to relatively normal operating modes. This was short-lived with the peak of new infections occurring early in Term 3 and the reinfection window reducing from 12 weeks to 4 weeks. This new surge of cases affected many of our staff and those of many other schools making obtaining relief staff increasingly difficult. Later in the term, further changes were made to isolation periods and recommendations for positive cases and close contacts.*

*In spite of the swiftness of changes and the uncertain start to the year, with the support and understanding of our community, we were able to ensure continuity of high-quality teaching programs and a safe learning environment for all our students. Our continued success as a school is a testament to the support, commitment and immense efforts of every member of our school community. Special thanks goes to our dedicated staff, students, parents and caregivers for their support, resilience and determination in ensuring that all our students were provided with the best educational experiences possible.*

*Sincerely*

*Jonas Byford  
Principal*



## School Vision Statement

*“Our purpose is to create a secure and positive environment developing the knowledge, skills and attitudes which maximise each child’s potential to contribute to society.”*



## School Overview

Established in 1979, East Beechboro Primary School is a highly respected school in the North Metropolitan Education Region. Our dedicated and professional staff work with a shared vision to establish a learning environment that provides a well-balanced education which maximises students' emotional, social and academic outcomes.

The school delivers comprehensive educational programs designed to produce well-rounded individuals who possess strong social and personal skills alongside their academic strengths. The programs reflect the importance of an effective early childhood education and the need for all our students to master essential literacy and numeracy skills. Professionals in associated fields of psychology, curriculum and visiting teacher services also provide valuable assistance in our endeavours to support the needs of all students.

The school provides specialist programs including, Languages (Indonesian), Music, Choir and Physical Education. Students identified as talented and gifted are given the opportunity to participate in a range of extra-curricular activities and curriculum extension.

East Beechboro Primary School takes pride in its productive role in the local community. We welcome parental involvement and encourage parents to take an active role supporting the school by working collaboratively with a shared vision of assisting our students to reach their potential.

We have a strong commitment to values and aspire to develop qualities that contribute to the growth of resilient students who are encouraged to actively demonstrate good citizenship and responsibility in their daily lives. East Beechboro Primary School uses the Virtues and Friendly Schools Plus programs as foundations for developing social and emotional learning. The explicit teaching of values creates a happy, safe, inclusive and supportive learning environment for all our students.

Students are encouraged to engage in leadership positions to allow them to develop the essential knowledge, skills and values that enable them to make valuable contributions to the school and wider community. All our leaders serve as representatives of the student body and have a leadership tradition of quality and excellence.

East Beechboro Primary School achieved Independent status in 2011 and since this time, the success of our school has been acknowledged by the Department of Education in consecutive positive Independent Public School Reviews.





# Business Plan

All Independent Public Schools are required to complete a Business Plan. The plan provides direction and strategies for growth and improvement in student outcomes and in all aspects of the school. The current Business Plan for East Beechboro Primary School runs from 2020-2023.

The plan is informed by the Department of Education's *Building on Strength – Future Directions for Public Schools, Focus 2022* and *Strategic Directions for Public Schools 2020-2024*. It outlines our direction

The East Beechboro Primary School Business Plan has been endorsed by the School Board and provides a focus for the strategic direction of our school in the final year of the plan.



## Our Targets

Writing achievement of 2022 Year Five students will be at or exceed NAPLAN, Like School, writing achievement.

Reading achievement of 2022 Year Five students will be at or exceed NAPLAN, Like School, reading achievement.

Numeracy achievement of 2022 Year Five students will be at or exceed NAPLAN, Like School, numeracy achievement.

Develop better consistency with teacher judgement in reporting on student grades and ABE (attitude, behaviour, effort)

Writing achievement of Year 3 students in 2022 will meet or exceed the Year 3 NAPLAN, Like School, writing achievement.

Reading achievement of Year 3 students in 2022 will meet or exceed the Year 3 NAPLAN, Like School, reading achievement.

Numeracy achievement of Year 3 students in 2022 will meet or exceed the Year 3 NAPLAN, Like School, numeracy achievement.

Maintain and improve student, parent and staff satisfaction survey results.

Meet the National Quality Standard for Kindergarten to Year 2 programs.

Attendance targets in 2022 will have continued to match and exceed the Western Australian state average.

## English and Other Language or Dialects (EAL/D)

In 2022, 111 students identified as having an additional background and language other than English. Of these students, 36 students were eligible for support.

Languages of our EAL/D students include:

|                    |            |            |
|--------------------|------------|------------|
| Aboriginal English | Hakha      | Shona      |
| Arabic             | Hazara     | Sinhala    |
| Burmese            | Hindi      | Spanish    |
| Cambodian          | Indonesian | Sudanese   |
| Cantonese          | Kannada    | Tagalog    |
| Chinese            | Karen      | Tamil      |
| Creole             | Lao        | Telegu     |
| Dari               | Malayalam  | Thai       |
| Farsi              | Mandarin   | Tigringa   |
| Filipino           | Maori      | Turkish    |
| French             | Nepali     | Ukrainian  |
| German             | Pashto     | Vietnamese |
| Greek              | Portuguese |            |
| Gujarati           | Samoan     |            |



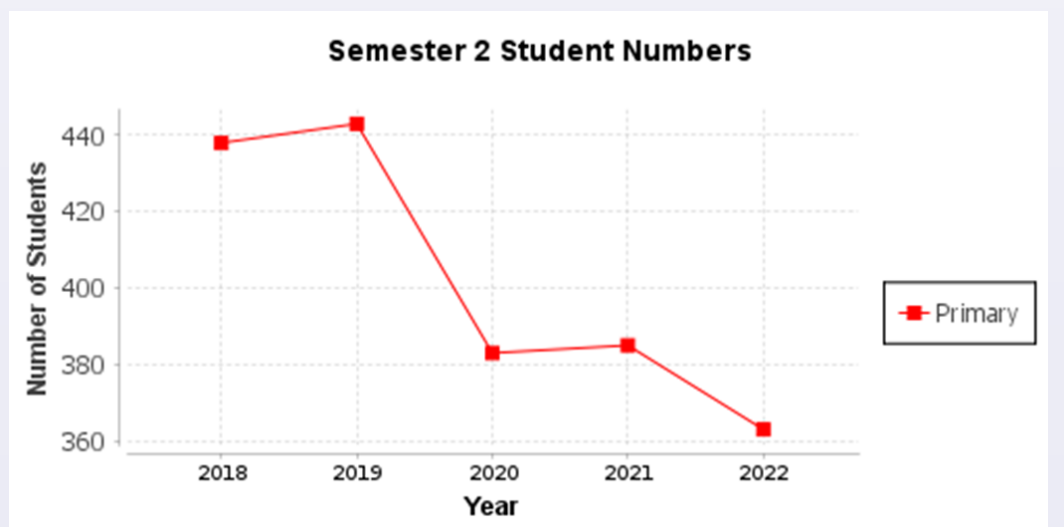
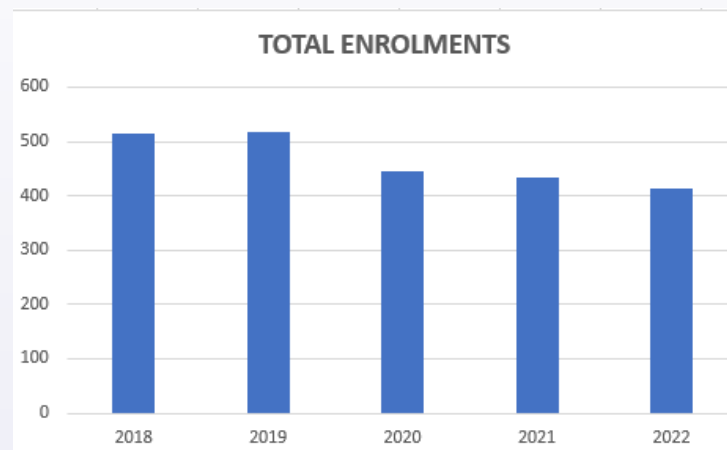
## Enrolment Trend

Student enrolments continue to be severely impacted by the increase in the number of new schools opening in close proximity to East Beechboro Primary School. Caversham Valley Primary School (2.7km distance—opened 2020) and Brabham Primary School (9.3km distance—opened 2021) have received a number of students previously enrolled with us. The new Dayton Primary School (5.1km distance) opens its doors in 2023 which will potentially see a further decline in our student numbers.

2022 Enrolment numbers have reduced significantly since last year. Although we continue to be part of the local solution by offering vacant Kindergarten positions to out of area students when schools within the area have no places available in Kindergarten, the increased capacity of these new schools to accept high numbers of students has seen very few enrolments eventuate from this offer.

Although we still maintain a 'shared area' with Caversham Valley Primary School, it is envisaged that very few enrolments may come from this zone as this is already extremely established with very few new families.

| Year         | 2018       | 2019       | 2020       | 2021       | 2022       |
|--------------|------------|------------|------------|------------|------------|
| Kindy        | 77         | 75         | 63         | 48         | 50         |
| PP           | 67         | 69         | 53         | 59         | 47         |
| Year 1       | 73         | 66         | 59         | 52         | 58         |
| Year 2       | 56         | 68         | 53         | 62         | 51         |
| Year 3       | 69         | 59         | 64         | 52         | 56         |
| Year 4       | 48         | 64         | 49         | 59         | 49         |
| Year 5       | 69         | 47         | 59         | 41         | 60         |
| Year 6       | 56         | 70         | 46         | 60         | 42         |
| <b>TOTAL</b> | <b>515</b> | <b>518</b> | <b>446</b> | <b>433</b> | <b>413</b> |



## Attendance

The goal of the Department of Education is to ensure that every child in the state is given the opportunity to gain an education and to achieve their potential at school.

Although regular student attendance is legally the parents' responsibility, in reality, schools, communities, government agencies and the Department of Education work together to ensure that school-aged children attend on a regular basis.

Absenteeism can be attributed to numerous reasons including illness, personal and family reasons and vacations. Regardless of the reason however, regular non-attendance may carry a variety of social and academic implications and attending school for less than 90% of the time puts a student at 'educational risk'.

As attendance patterns and attitudes to school and learning are formed early, it is essential that students receive the support they need to develop a positive attitude to school, including attendance. Students who learn good attendance habits early are more likely to continue this attitude throughout their schooling years.

Improving student attendance is a complex task as there are often many factors in play impacting the student's ability to attend. At East Beechboro Primary School, we have robust processes in place to assist students and families when attendance is an issue and we work closely with them to encourage re-engagement. Student attendance figures are monitored and regular parent communication is maintained in regards to unexplained student absences and individual cases of concern.

The overall attendance at East Beechboro Primary School dropped from 92.5% in 2020 to 89.7% in 2021 and 86.6% in 2022. A significant contributor to this decline is the COVID-19 pandemic and quarantining regulations. It is also however, a reflection of the vigilance of both the school and parents ensuring students stay home if unwell and heeding the advice and recommendations of the Government and the WA Department of Health. It must be noted that the Like School and WA Public Schools average also experienced a similar decline.

A breakdown of absences shows that 63% of absences were approved and 37% were unauthorised. Authorised absences include instances of illness and where a valid reason has been provided. Unauthorised absences are those that have not been approved by the school and includes unauthorised vacations which constitutes 21% of the unauthorised absences.

Our focus on improving attendance figures and educating our community on the importance of regular school attendance will continue in 2023.

## Attendance Overall Primary

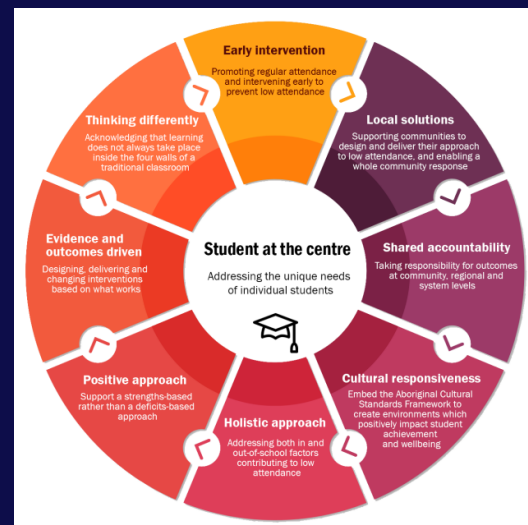
|      | Total  |              |                   |
|------|--------|--------------|-------------------|
|      | School | Like Schools | WA Public Schools |
| 2020 | 92.5%  | 91.5%        | 91.9%             |
| 2021 | 89.7%  | 90.2%        | 91%               |
| 2022 | 86.6%  | 85.2%        | 86.6%             |

## Attendance % - Compulsory Primary Year Levels

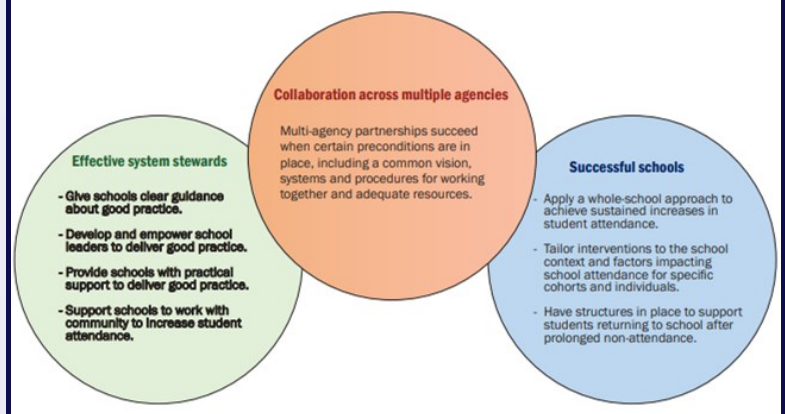
|                        | PPR | Y01 | Y02 | Y03 | Y04 | Y05 | Y06 |
|------------------------|-----|-----|-----|-----|-----|-----|-----|
| 2020                   | 92% | 91% | 92% | 94% | 93% | 94% | 92% |
| 2021                   | 89% | 90% | 87% | 91% | 91% | 90% | 90% |
| 2022                   | 90% | 86% | 87% | 86% | 88% | 87% | 81% |
| WA Public Schools 2022 | 86% | 87% | 87% | 87% | 87% | 87% | 86% |

## Every Day Matters

The Department of Education's plan and approach to attendance improvement is underpinned by the following principles with the needs of the student at the centre.



## Strengthening student attendance requires a whole community approach.





## STUDENT PERFORMANCE

The graphs to the left demonstrate student performance in the 2022 NAPLAN tests.

The data indicates that the Year 3 and Year 5 average scores for our students exceeded Like Schools in all areas other than Numeracy in the 2022 tests which continues to meet the targets set in the school Business Plan.

Although the results of this year's cohorts have declined slightly from the high scores of last year, it is pleasing that the majority of test results are above like schools despite the disruptions experienced in first semester.

As NAPLAN was cancelled in 2020, this is a unique year in that this was the first experience of the tests for our Year 5 as well as our Year 3 students. We continued to work with our students to ensure that they were well prepared in terms of what to expect in the tests.

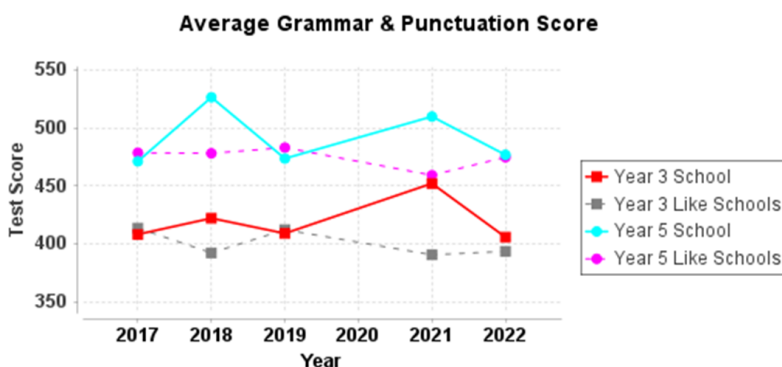
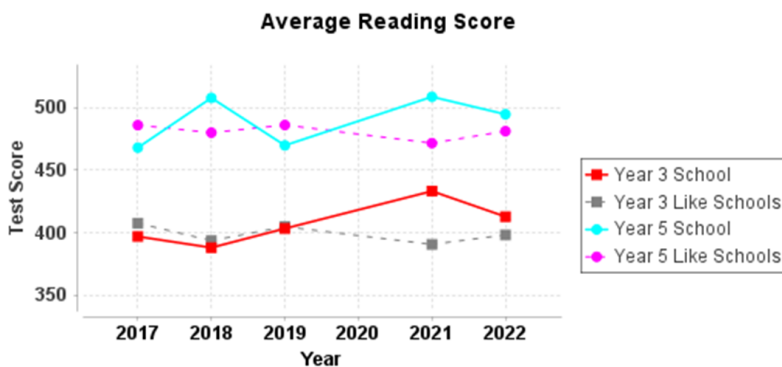
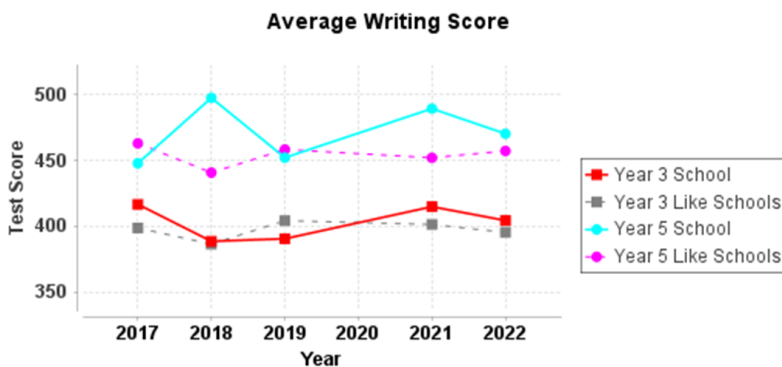
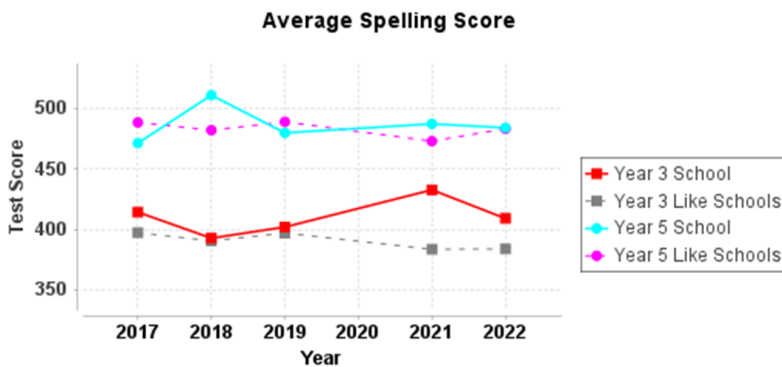
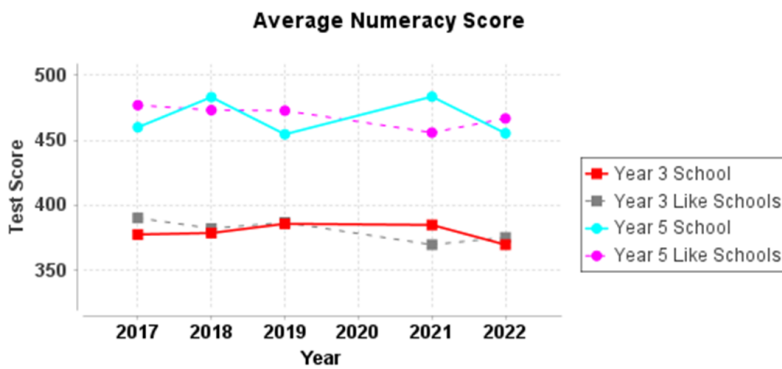
Due to the disruption caused to schools nationwide by the pandemic, a Comparative Performance Summary has not been distributed to schools as the results may not be indicative of true performance.

We will continue our focus on Literacy and Numeracy into 2023.

### On Entry Assessment

During Weeks 3 and 6 of Term 1, teachers conduct one-on-one assessments with all Pre-Primary students to assess their skills and understandings of oral language, reading, writing and numeracy. The purpose of the testing is to provide teachers with information about the skills and understandings that a child brings to school. Assessment early in the year enables teachers to plan and develop targeted learning programs designed to address individual needs and identify students who may need additional support or extension.

Students are continually monitored to ensure that changing needs are addressed.



# Our Staff

## ADMINISTRATION

|                |                  |
|----------------|------------------|
| Jonas Byford   | Principal        |
| Nicky Suckling | Deputy Principal |
| Jamie Maidens  | Deputy Principal |
| Ann Evans      | MCS              |
| Simone Andrews | MCS              |
| Evelyn Byford  | School Officer   |
| Michelle Page  | School Officer   |

## SPECIALIST STAFF

|                  |                              |
|------------------|------------------------------|
| Emily Zissis     | Phys Ed                      |
| Charlene Tighe   | Phys Ed                      |
| Mike Glendinning | Languages (Indonesian)       |
| Robyn Veitch     | Music                        |
| Michelle Jacka   | Learning Support Coordinator |
| Jaye Jowett      |                              |
| Frank Guillaume  | Network Support Officer      |



## TEACHING STAFF

|                  |                            |
|------------------|----------------------------|
| Shirley Rampukar | Kindergarten & Pre-Primary |
| Annette Clohessy | Kindergarten               |
| Jenny Pattinson  | Kindergarten & Pre-Primary |
| Katrina Merrells | Pre-Primary                |
| Michelle Jacka   | Pre-Primary                |
| Jasia Hawkins    | PP/Year 1                  |
| Emma Tolomei     | Year 1                     |
| Karen Denning    | Year 1                     |
| Charlene Tighe   | Year 1                     |
| Paula O'Toole    | Year 1                     |
| Alexis Jamieson  | Year 1/2                   |
| Simone Challis   | Year 2                     |
| Kathleen Northey | Year 2                     |
| Shaunna Ramirez  | Year 2                     |

## TEACHING STAFF

|                  |          |
|------------------|----------|
| Rebecca Veal     | Year 3   |
| Lydia Fisher     | Year 3   |
| Megan Gillespie  | Year 4   |
| Lia Berryman     | Year 4   |
| Kyra Wayte       | Year 4   |
| Stefanie Vranjes | Year 4   |
| Sheridan Hasler  | Year 4/5 |
| John Gable       | Year 6   |
| Mason Faribairn  | Year 6   |

## SUPPORT STAFF

|                         |                     |
|-------------------------|---------------------|
| Pauline Robertson       | Librarian           |
| Sally Cicchini          | Education Assistant |
| Elissa Farr             | Education Assistant |
| Michelle Ellis          | Education Assistant |
| Bianca Simpson          | Education Assistant |
| Jenny McAlpine          | Education Assistant |
| Lisa Jarvis             | Education Assistant |
| Natasha Haythornthwaite | Education Assistant |
| Lawana Williams         | Education Assistant |
| Cynthia Snelling        | Education Assistant |
| Helen Jay               | Education Assistant |
| Joanne Blake            | Education Assistant |
| Alpa Shah               | Education Assistant |
| Kanta Halai             | Education Assistant |
| Natalie Cavill          | Education Assistant |

## SUPPORT STAFF

|                    |                   |
|--------------------|-------------------|
| <b>GARDENER</b>    |                   |
| Jeffrey Heesmans   | Gardener          |
| Lionel Deschamp    | Gardener          |
| <b>CLEANERS</b>    |                   |
| Martin Perkins     | Cleaner In Charge |
| Peggy Perkins      | Cleaner           |
| Lucy Sukerni       | Cleaner           |
| Fatma Mohamed-Aman | Cleaner           |

# Student Support

## Jedda Crow (Psychologist) -3 days per F/N

Our School psychologist worked closely with school administration, classroom teachers, students and parents to help meet the social, emotional, learning and behaviour needs of our students by providing support in: **Behaviour:** Working with students, parents and their schools to identify and change target behaviours at the individual, group and systemic level. **Learning:** Conducting assessments of students experiencing learning difficulties and/or disabilities at schools. Supporting schools in making appropriate curriculum adjustments for students in order to enhance their learning outcomes. **Mental Health and Wellbeing:** Providing direct support for students experiencing mental health and wellbeing difficulties. Assisting schools and children maximise the development of positive mental health and wellbeing.

**Clare Wagner (Chaplain)** We were very fortunate to have Clare join East Beechboro Primary School in July 2022. Working two days a week, Clare works alongside staff to facilitate the social and emotional wellbeing of all members of the school community by

- providing pastoral care
  - assisting and supporting school events
  - linking the school with the local community,
  - facilitating pastoral support programs
- support agencies and organisations

**Sandhya Peethambaran (School Health Nurse)** Our Child Health Nurse (Health Department) visits the school periodically to check particular year groups and parents are notified of any issues raised. Screening for vision and hearing occur in the early years of schooling.

**Dental Therapy Centre** Free dental therapy is offered to our enrolled students at Caversham Valley Primary Dental Therapy Centre.



2022 marked it's 7th year in partnership with Camp Australia. The onsite outside school hours care program provides children with a safe environment in which they can explore and play. Serving as a bridge between home and school, the program provides educational activities, and makes time for students to play with friends whilst assisting parents with balancing work and family commitments. Since 2020, enrolments into Camp Australia have increased from 17 to 32 (with attendances varying from day-to-day).





## Specialist Subjects - Health & Physical Education

In Health and Physical Education, students learn how to develop and enhance their own health and safety and that of others through participation in a variety of activities and lessons.

The Health and Physical Education curriculum enables students to take part in a program that is challenging, enjoyable and relevant. Students develop the knowledge, understanding and skills to make sound decisions and take ownership of their personal identity by building resilience, managing risk and developing respectful relationships.

The Health and Physical Education program is designed to provide students with movement skills and the ability to confidently and ably, participate in a variety of physical activities.

East Beechboro Primary School continues to maintain a robust and quality Health and Physical Education program which is comprehensive, highly structured, organised and competitive.

All students from Pre-primary through to Year 6 take part in an extensive range of physical activities which are designed to encourage participation, teamwork, sportsmanship, perseverance and resilience whilst developing physical skill in individual and team-based sports. Students from Pre-Primary to Year 6 participate in track, field and tabloid sports and students from Years 1-6 take part in In-term swimming lessons.

As part of the Senior school program, students participate in a variety of sports including athletics, cross country, cricket, netball, soccer, basketball and are all given the opportunity to compete at an interschool level. East Beechboro Primary School has a strong tradition of excellence and embedded in this, is a culture of commitment, determination, encouragement and high expectation. We were grateful to have been able to hold a number of our planned Phys Ed and Department-based programs, however unfortunately in 2022, the Summer Interschool Carnival was cancelled due to the increase in COVID-19 transmission amongst staff and students across all participating schools.

In 2022, we were very fortunate to have Hockey WA visit our school as part of the Sporting Schools Program. An Australian Government initiative, the Sporting Schools program is designed to help increase children's participation in sport, expose them to a new sport and skills and provide them with community sporting opportunities.

### Events and Competitions in 2022:

Swimming Program 24 October—4 November (Yr 1-6)

Athletics Carnival

Interschool Summer Carnival - Cancelled

Interschool Winter Carnivals (Yr 5&6)

Faction Cross Country & Interschool Cross Country

### Notable Achievements

**2022 Faction Athletics Carnival** Winners – Numbats

**Faction Cross Country Carnival** Winners - Wallabies

**Interschool Winter Carnival** Intermediate Champion Boy & Runner Up Champion Boy





## Music

The Music specialist subject is an engaging, entertaining program which enables students to be challenged and inspired. Linked directly to the Western Australian Curriculum, It allows students to be imaginative and innovative whilst inspiring critical thought. In Music classes, students are encouraged to achieve their creative and expressive potential.

Depending on year level, students develop aural, improvising and singing skills. Students in Years 3 to 6 are given the opportunity to join the Choir and perform at school-based events including our ANZAC Service, Year 6 Graduation Assembly and the Christmas Carols Community event. For the first time, the Choir performed at the 2022 Junior School Final Assembly and gave an outstanding performance. These assemblies are very well attended by parents and families and would have given our students another opportunity at performing in front of a relatively large audience.

Students in 2022 were fortunate to have been given the opportunity to perform at the Massed Choir Festival as this event was cancelled in 2021 due to COVID-19. Students performed alongside several hundred students from other schools around Perth. This is a prominent event held at the Perth Concert Hall. Students and music teachers work with experienced conductors and students are given the rare opportunity of showcasing their skills in a large group and in front of an audience. The songs chosen for the event are written by Australian composers and the choir is accompanied by a professional band and string quartet.

## Languages - Indonesian

The acquisition of a second language is a rich and challenging experience that provides students with many opportunities. Students who learn another language improve their communication skills and expand their understanding of other cultures. Furthermore, it enhances literacy and comprehension skills and the ability to read and write.

Students who learn another language develop an understanding of and respect for other countries, cultures and people.

The Languages curriculum develops student knowledge, understanding and skills. During Indonesian lessons, students learn about cultural diversity and acquire the ability to communicate proficiently in the Indonesian language. Students are encouraged to immerse themselves in the Languages program and take part in a variety of learning experiences designed to reinforce understanding and increase linguistic skill.

There are many advantages to studying Indonesian.

- As the Republic of Indonesia is Australia's closest neighbour and important trade partner, learning the language can open up many business, tourist and educational opportunities.
- Indonesian is an easily acquired language as it shares many similarities to English. It uses the same alphabet and is phonetic.
- The Indonesian language has adopted some English words into their language which increases understanding and fluency.
- Indonesian is the tenth most spoken language in the world.



In 2022, Year 5 students presented an assembly item demonstrating their understanding of the Indonesian language.

Dressed in traditional costume, students sang the traditional children's song, Potong Bebek Angsa. This cheerful song about cooking was accompanied by a lively dance routine.



East Beechboro Primary School has long established and strong relationships with its community. These effective and highly successful partnerships that are built on trust and mutual respect are vital to supporting student learning, wellbeing and academic achievement. Parents are encouraged to take an active role in supporting the school by working collaboratively with a shared vision of assisting our students to reach their potential. Parental involvement is welcomed and very much appreciated as any form of participation involves the generous commitment of time.

The School Board and P&C have different but very valued roles within the school. The School Board works in a consultative and decision-making capacity to achieve the best outcomes for students. The P&C provides parents with the opportunity to determine the needs of the school community, share information and views, learn about school policies and programs and help raise funds to help provide the best educational outcomes for all students.

Thank you to all the members of our School Board and the P&C for their commitment, dedication and invaluable contribution to the success of our school. We look forward to continuing our partnership in 2023.

## School Board

The East Beechboro Primary School Board plays a vital role in the accountability, effective governance and running of the school whilst providing support and guidance in school planning and future direction setting.

By bringing their own unique experiences and expertise, the School Board assists the school to achieve the best student outcomes by helping set the long term future for the school and by overseeing school operations.

In 2022, the Board assisted with:

- Endorsing the 2021 Annual Report
- Reviewing the school budget
- Approving the 2023 Personal Items List and Voluntary Contributions
- Approving the proposed 2023 School Development Days
- Approving the extension of the Business Plan

This year saw the retirement from the School Board of two of our longest serving members, Sharon Ashton and Rose Elliott. On behalf of the entire East Beechboro Primary School community, I would like to thank Sharon and Rose for their outstanding service to our school throughout the years.

### School Board Membership

|   |   |   |   |   |   |
|---|---|---|---|---|---|
|  |  |  |  |  |  |
| Jonas Byford<br>Principal   | Nicky Suckling<br>Deputy Principal  | Stef Vranjes<br>Teacher   | Rebecca Veal<br>Ex-Officio  | Ann Evans<br>Ex-Officio   | Simone Andrews<br>Ex-Officio  |
|  |  |  |  |  |  |
| Karen Lippinkhof<br>Board Chair   | Annamaria Paolino<br>Community Representative                                       | Sharon Ashton<br>Parent Representative  | Rose Elliott<br>Parent Representative   | Anne Chew<br>Parent Representative  | Casey Chandler<br>Parent Representative   |

Not pictured: Clinton Graham & Terry Greenhill

## P&C

We are extremely fortunate to have an energetic, dedicated and hard-working P&C who play a pivotal role in assisting the school in ensuring students are provided with the best educational experiences possible.

The P&C takes an active interest in school affairs and educational developments. 2022 had its challenges but the determination of our P&C ensured that events were held and that fundraising for the school and students took place.

Events and activities held in 2022 by the P&C include:

- Management and running of the Uniform Shop
- Coordination of Year 6 Leavers Shirts
- Mother's Day Stall
- Father's Day Stall
- Rollerdrome Event

Funds raised by the P&C in 2022 was used to have air-conditioning units installed in the Undercover Area. This was gratefully received by all members of the community, making assemblies, meetings and sporting events a pleasant and comfortable experience.



Donna Linden -  
P&C President



# Student Achievement

Student achievement is acknowledged and celebrated as part of our positive behaviour processes and is engrained in our school culture.

Students are encouraged to pursue personal excellence in all facets of school life (academic and non-academic). Recognition of personal excellence is acknowledged formally at assemblies and ceremonies and informally in class.

Awards and certificates are presented for academic success, demonstration of the school virtues, citizenship and sporting achievement. In addition, the school operates a school specific 'Andrew Stewart' reward system using green and pink tokens. The system is used throughout the school in the classroom and playground. Students are rewarded for good behaviour, demonstration of good work, effort and school values .

Acknowledgement of positive student behaviour and success is demonstrated by:

Honour Certificates

Andrew Stewart Certificates

Andrew Stewart Badges

Andrew Stewart Merit Bar

Andrew Stewart Medallions

Mid & End of Term Rewards

Sporting ribbons and medallions

Councillor & Faction Captain Certificates

Certificates of Distinction

Leavers Awards

North Metropolitan Medallion of Excellence

Aussie of the Month Awards

Mathletics & Reading Eggs Awards.

Swimming Certificates

Public acknowledgement of entry into high school specialist programs

Kindergarten Graduation Certificates

Recognition of positive behaviours instils pride, improves confidence and motivates the recipient to continue their commitment to demonstrating positive behaviours whilst inspiring other students to pursue personal excellence.





## 2022 Student Leadership



Photo Courtesy MSP Photography

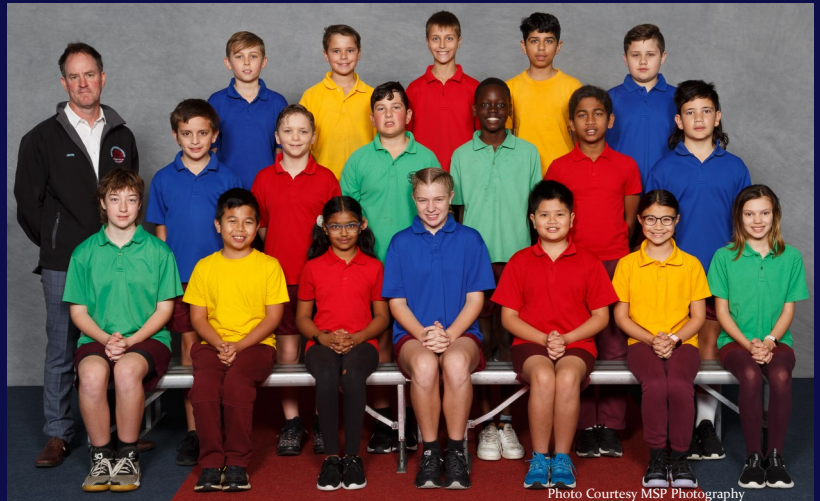


Photo Courtesy MSP Photography

East Beechboro Primary School strongly encourages senior students to develop leadership skills and supports them in seeking leadership positions. Leadership opportunities are encouraged in formal and informal roles. Formal roles include Student Councillor and Faction Captain positions in which students are elected. Students are elected based on their leadership skills, their ability to act responsibly and respectfully and their communication and organisational skills. Students in leadership positions consistently demonstrate the school values and act as role models to all students.

Informal roles involve important duties that assist in the running of the school. These roles include:

- PA Monitors and Siren Ringers
- Gate Monitors
- Fundraising to assist with end of year functions
- Flag Monitors
- Audio/Visual Monitors
- Classroom Couriers
- Assisting in Assemblies & Sporting Events

Acquiring these leadership skills assists students with the transition into high school and develops individual and team skills.

Congratulations and thank you to our 2022 Student Leaders for their outstanding contributions to the school and we wish all our Year 6 Leavers the very best for the future.

## 2022 Leavers

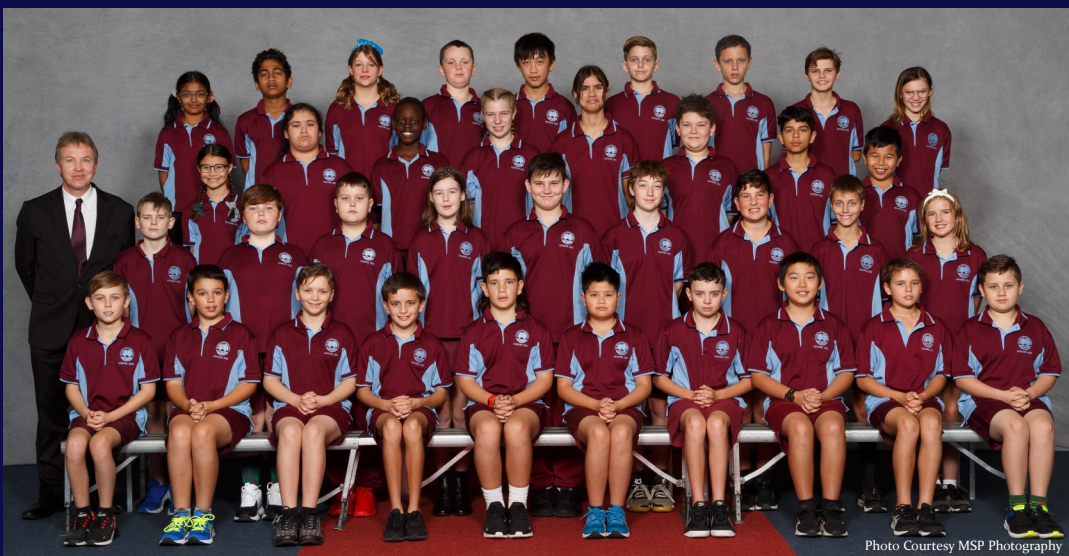


Photo Courtesy MSP Photography

### High School Destinations

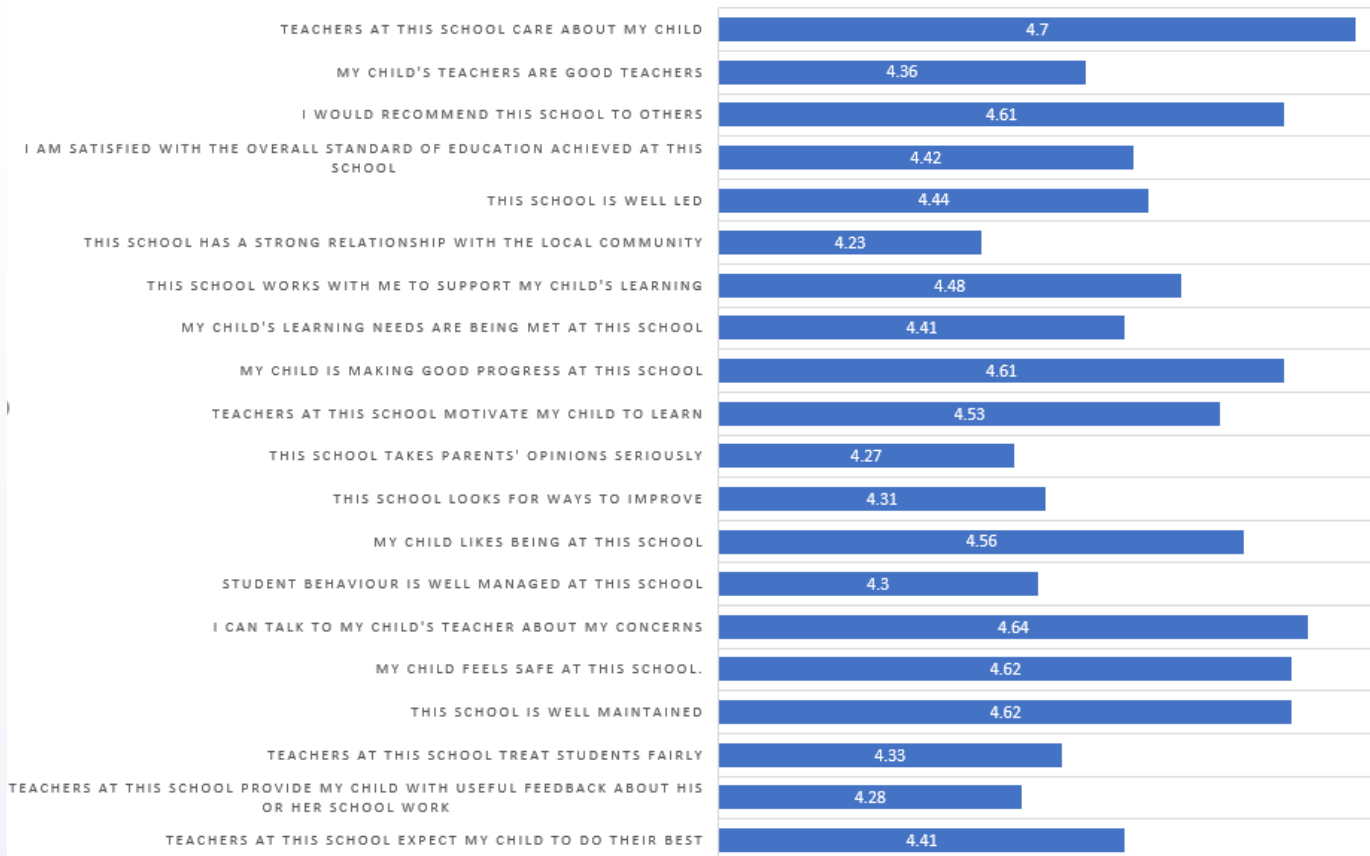
Applecross SHS  
Aveley SHS  
Ellenbrook Secondary College  
Hampton SHS  
John Forrest SHS  
John Septimus Roe Anglican  
Community School  
La Salle College  
Kiara College  
Mazenod College  
Mount Lawley SHS  
Rossmoyne SHS  
Shenton College

Specialist Programs & Scholarships offered to students include:

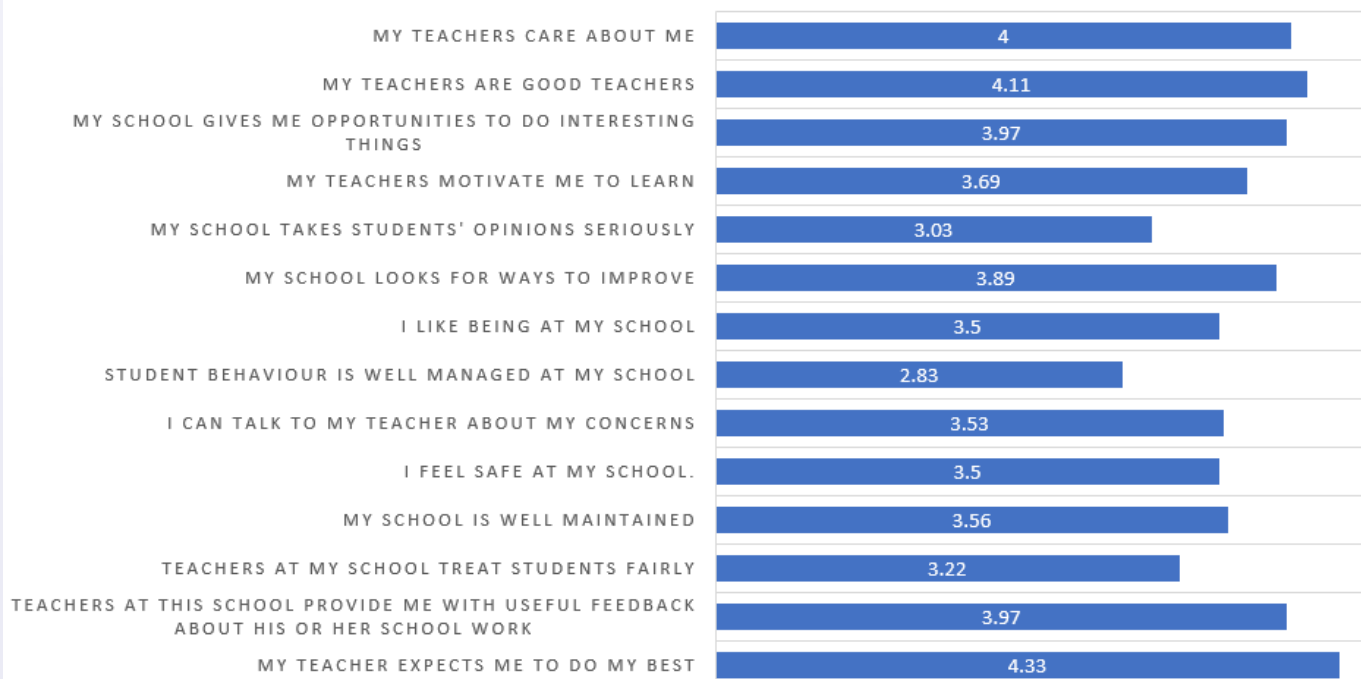
**Hampton SHS** - Performing Arts & Athletics Academy **Shenton College** - Gifted and Talented Program  
**Applecross SHS** - Tennis **Mount Lawley SHS** - Aboriginal Excellence Program

The school community is surveyed biennially to ascertain how different parts of the community perceive the school. The results, which form an important part of our school review process, are used to determine areas of strength and those requiring attention. The information gained from these responses helps formulate our future direction. Responses to questions are calculated on a five point scale (1 = strongly disagree to 5 = strongly agree).

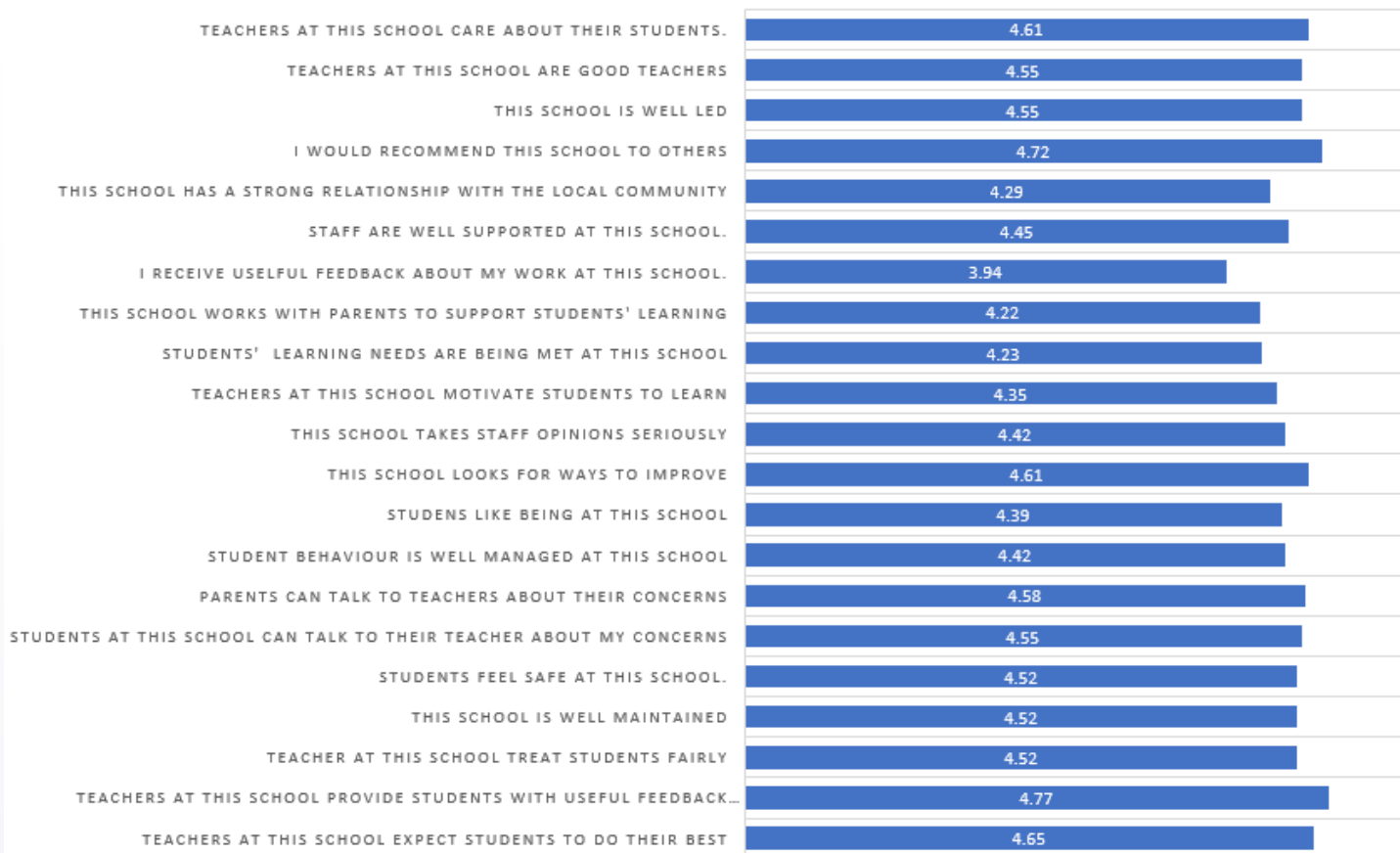
### 2022 PARENT SURVEY



### 2022 STUDENT SURVEY



## 2022 STAFF SURVEY



Responses to questions are subjective and reflect the varying perceptions of the school recorded in the surveys. It is interesting to note the variance in scores between the parent and staff survey in comparison to the student survey which is completed by our Year 6 students. There may be many factors contributing to the ratings provided by some students which may include those that are outside our control. It is important to remember that students do not share the same experiences both inside and outside of school and will behave and respond to situations in relation to their perception of that situation.

In relation to the Student Survey from our Year 6 students, the question relating to the management of student behaviour received the lowest score (2.83 out of 5). The perception that our behaviour management processes are imbalanced or unjust may be an indication that students are unaware of how all behaviour is managed in the school. Improving student understanding of school behaviour management and continuing to emphasise the restorative aspect of our processes can be areas of focus going forward.

Although significantly different to the staff and parents survey results, the responses of our Year 6 students are nonetheless valid and every effort will be made to address these gaps.

36 students from Year 6, 64 parents and 31 staff responded to the anonymous survey. The number of respondents to the 2022 survey and the results were very pleasing and indicate a noticeable improvement on the 2020 survey results.

All responses to the surveys will be used to inform our improvement processes.

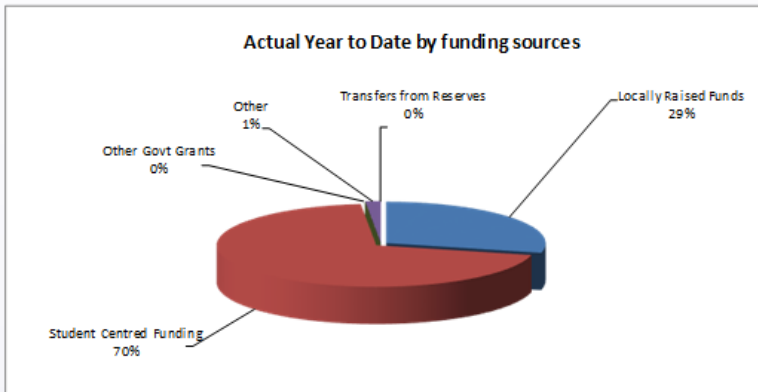
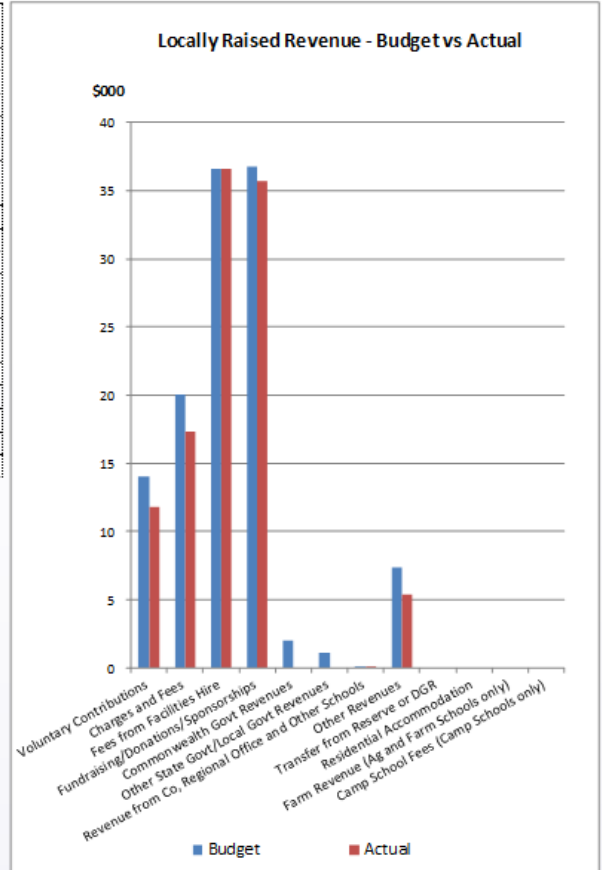
Thank you to those parents, students and staff who took the time to complete the survey. Your feedback is invaluable and very much appreciated.



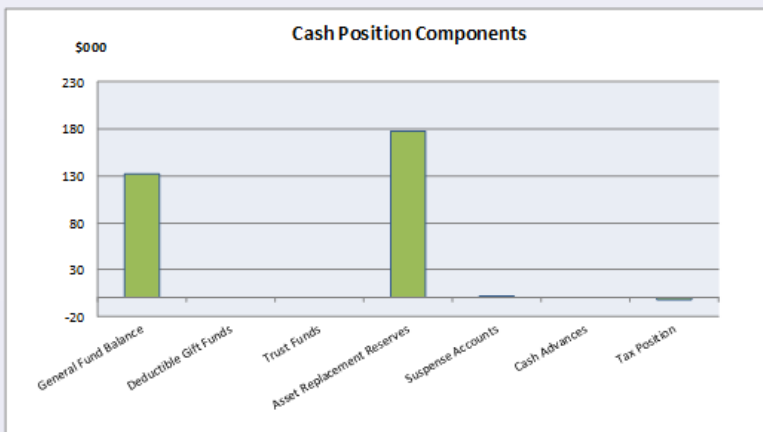
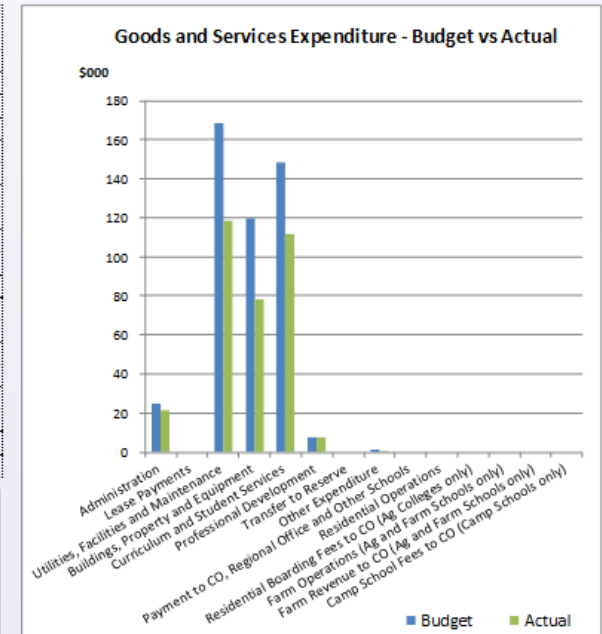


# East Beechboro Primary School Financial Summary as at 31<sup>st</sup> December 2022

| Revenue - Cash & Salary Allocation                   | Budget               | Actual               |
|--|----------------------|----------------------|
| 1 Voluntary Contributions                            | \$ 14,000.00         | \$ 11,799.80         |
| 2 Charges and Fees                                   | \$ 20,007.00         | \$ 17,312.34         |
| 3 Fees from Facilities Hire                          | \$ 36,614.00         | \$ 36,613.64         |
| 4 Fundraising/Donations/Sponsorships                 | \$ 36,740.00         | \$ 35,702.17         |
| 5 Commonwealth Govt Revenues                         | \$ 2,000.00          | \$ -                 |
| 6 Other State Govt/Local Govt Revenues               | \$ 1,100.00          | \$ -                 |
| 7 Revenue from Co, Regional Office and Other Schools | \$ 62.00             | \$ 61.27             |
| 8 Other Revenues                                     | \$ 7,312.70          | \$ 5,410.95          |
| 9 Transfer from Reserve or DGR                       | \$ -                 | \$ -                 |
| 10 Residential Accommodation                         | \$ -                 | \$ -                 |
| 11 Farm Revenue (Ag and Farm Schools only)           | \$ -                 | \$ -                 |
| 12 Camp School Fees (Camp Schools only)              | \$ -                 | \$ -                 |
| <b>Total Locally Raised Funds</b>                    | <b>\$ 117,835.70</b> | <b>\$ 106,900.17</b> |
| Opening Balance                                      | \$ 117,489.78        | \$ 117,489.78        |
| Student Centred Funding                              | \$ 245,574.72        | \$ 245,574.72        |
| <b>Total Cash Funds Available</b>                    | <b>\$ 480,900.20</b> | <b>\$ 469,964.67</b> |
| Total Salary Allocation                              | \$ -                 | \$ -                 |
| <b>Total Funds Available</b>                         | <b>\$ 480,900.20</b> | <b>\$ 469,964.67</b> |



| Expenditure - Cash and Salary                         | Budget               | Actual               |
|---|----------------------|----------------------|
| 1 Administration                                      | \$ 24,530.00         | \$ 21,327.88         |
| 2 Lease Payments                                      | \$ -                 | \$ -                 |
| 3 Utilities, Facilities and Maintenance               | \$ 168,553.00        | \$ 118,707.05        |
| 4 Buildings, Property and Equipment                   | \$ 119,804.00        | \$ 78,431.66         |
| 5 Curriculum and Student Services                     | \$ 148,540.23        | \$ 111,376.74        |
| 6 Professional Development                            | \$ 7,500.00          | \$ 7,276.31          |
| 7 Transfer to Reserve                                 | \$ -                 | \$ -                 |
| 8 Other Expenditure                                   | \$ 1,107.73          | \$ 409.52            |
| 9 Payment to CO, Regional Office and Other Schools    | \$ -                 | \$ -                 |
| 10 Residential Operations                             | \$ -                 | \$ -                 |
| 11 Residential Boarding Fees to CO (Ag Colleges only) | \$ -                 | \$ -                 |
| 12 Farm Operations (Ag and Farm Schools only)         | \$ -                 | \$ -                 |
| 13 Farm Revenue to CO (Ag and Farm Schools only)      | \$ -                 | \$ -                 |
| 14 Camp School Fees to CO (Camp Schools only)         | \$ -                 | \$ -                 |
| <b>Total Goods and Services Expenditure</b>           | <b>\$ 470,034.96</b> | <b>\$ 337,529.16</b> |
| Total Forecast Salary Expenditure                     | \$ -                 | \$ -                 |
| <b>Total Expenditure</b>                              | <b>\$ 470,034.96</b> | <b>\$ 337,529.16</b> |
| Cash Budget Variance                                  | \$ 10,865.24         |                      |



| Cash Position Components     |                      |
|------------------------------|----------------------|
| <b>Bank Balance</b>          | <b>\$ 309,331.99</b> |
| Made up of:                  |                      |
| 1 General Fund Balance       | \$ 132,435.51        |
| 2 Deductible Gift Funds      | \$ -                 |
| 3 Trust Funds                | \$ -                 |
| 4 Asset Replacement Reserves | \$ 178,022.93        |
| 5 Suspense Accounts          | \$ 984.55            |
| 6 Cash Advances              | \$ -                 |
| 7 Tax Position               | \$ (2,111.00)        |
| <b>Total Bank Balance</b>    | <b>\$ 309,331.99</b> |

**MARCH**

In Term 1, our Year 6 students took part in the Team Challenge Excursion. This was an active day filled with team building activities. As a whole school, we celebrated Harmony Day and showed our support of the message that bullying at anytime is never okay on Bullying No Way Day.

Our final assembly of the term was Easter themed. We were very fortunate to have had a visit from the Easter Bunny who visited each class and spent some time with the students.



**APRIL**

We were again unfortunately unable to share our ANZAC Service with our school community and special guests due to COVID-19 restrictions. We were still able to hold a respectful tribute which was recorded and shared with students at school and with families via Connect and the school website.



**MAY**

To help celebrate Mother's Day, our fantastic P&C held the Mother's Day Stall which enabled all students to make a special purchase for their mum for their special day.

To help inspire a love of reading and books, students were also invited to take part in a reading challenge with the Marvellous May Readathon.



**JUNE**

In June our school had a bit of fun with Wacky Hair Day which was a fundraiser for our Year 6 students. Students came to school with amazing hairstyles. We also celebrated NAIDOC week with some hands-on and informative activities about Aboriginal culture. Classes took part in art activities and also engaged in Sand Stories. Aboriginal culture places a lot of value in storytelling. Sand Stories tell a narrative through speech, song, gesture and drawn symbols.

**AUGUST**

Our Year 6 students held another fun fundraising event with Pyjama Day. Book Week is an annual tradition and the theme for 2022 was "Dreaming With Eyes Open". To celebrate, students took part in class-based activities and dressed up as their favourite book character. Our P&C held an after school event at the Rollerdrome. There was a fantastic turnout and everyone thoroughly enjoyed themselves.





**SEPTEMBER**

Sport features very highly in September with our sporting carnivals. This was a well organised event that was thoroughly enjoyed by the whole community. Our P&C held Father's Day stalls to enable students the opportunity to make a purchase to spoil their dad on their special day. Our Choir performed wonderfully along with other schools from Perth at the Massed Choir Festival at the Perth Concert Hall. and students dressed in football gear and fundraised for the Fight Cancer Foundation as part of Footy Colours day.



**OCTOBER**

Our whole school was invited to take part in a performance by members of WASO (West Australian Symphony Orchestra). The quartet that visited us provided interesting information about the life of a musician, the instruments they have mastered and the music they play.



**NOVEMBER**

For Remembrance Day, our Student Councillors held a poignant tribute with the whole school observing a one minute silence. Our Year 5 students took part in an Electoral Commission incursion which gave them an insight into how voting works. This was a timely event as Student Councillor Elections occurred shortly after. We are very fortunate to have an incredibly supportive community. As a thank you to all those parents, caregivers and family members who so generously volunteer their time and assistance to our school, we held a special morning tea in their honour.



Gina Williams and Guy Ghose visited our school and entertained our students with a wonderful Wanjoo performance. This was a very informative and highly enjoyable incursion.



The Book Fair was a great opportunity to promote literacy and the enjoyment found in reading. Students were spoilt for choice with the variety of items available for purchase.



**DECEMBER**

The end of the year is a wonderful time for celebration. Starting off with our Kindy graduations then followed by farewell events for our Year 6 students and final assemblies where selected students were recognised for outstanding efforts and presented with Certificates of Distinction. Our final community event of the year was our traditional Christmas Carols evening held on our oval. This festive events showcases our students who present a Christmas themed song. This is a wonderful way to end the year as a whole community.





